

Product Details

Summary

Product name	Anti 2019-nCoV M protein polyclonal antibody
Catalog#	ATP240
description	Produced in rabbits immunized with purified, Recombinant SARS-CoV-2 M protein
Accession #	P0DTC5
Alternative names	Membrane protein, E1 glycoprotein, Matrix glycoprotein, M
Stability & Storage	Use a manual defrost freezer and avoid repeated freeze thaw cycles. Store at 2 to 8 °C for one week . Store at -20 to -85 °C for twelve months from the date of receipt.
Specificity	Recognizes SARS-CoV-2 M protein
Isotype	IgG
Host	Rabbit
Clonality	Polyclonal
Conjugation	Unconjugate
Species reactivity	Severe acute respiratory syndrome coronavirus 2 (2019-nCoV) (SARS-CoV-2)
Tested applications	Elisa
Immunogen	MADSNGTITVEELKKLLEQWNLVIGFLFLTWCILLQFAYANRNRFLYIIKLIFLWLLWP\

Background

Component of the viral envelope that plays a central role in virus morphogenesis and assembly via its interactions with other viral proteins. The M glycoprotein is conserved across the β -coronaviruses. The multiple sequence alignment shows a remarkable similarity (98% identity) among the Sars-CoV-2 M variants and the sequences from Bat and Pangolin isolates . The M protein is predicted to contain a triple-spanning transmembrane (TM) region, a single N-glycosylation site near its N-terminus that is in the exterior of the virion, and a long C-terminal region in the interior.

Product performance

Form	Liquid
Buffer	PBS, pH7.4, containing 0.05% proclin300, 50% glycerol.
Concentration	1.08mg/ml
MW	25kDa

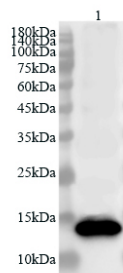


Application

Dilution Range

Elisa: 1:4000~1:8000

Tested Picture



Lysate: 0.5µg/lane
Lane 1: Recombinant SARS-CoV-2
M protein

Predicted band size: 15kDa
Observed band size: 15kDa

Recombinant Protein lysates were subjected to SDS PAGE followed by western blot with rabbit anti SARS-CoV-2 (2019-nCoV) M protein antibody at dilution of 1:16000.

Note

For research use only.