

Product Details

Summary

Product name	Anti 2019-nCoV 3C-like Proteinase polyclonal antibody
Catalog#	ATP236
description	Produced in rabbits immunized with purified, Recombinant SARS-CoV-2 3C-like Proteinase
Accession #	P0DTC1
Alternative names	3C-like proteinase , 3CL-PRO, 3CLp, Main protease, Mpro, Non-structural protein 5, SARS coronavirus main proteinase, Replicase polypeptide 1a
Stability & Storage	Use a manual defrost freezer and avoid repeated freeze thaw cycles. Store at 2 to 8 °C for one week . Store at -20 to -81 °C for twelve months from the date of receipt.
Specificity	Recognizes SARS-CoV-2 3C-like Proteinase
Isotype	IgG
Host	Rabbit
Clonality	Polyclonal
Conjugation	Unconjugate
Species reactivity	Severe acute respiratory syndrome coronavirus 2 (2019-nCoV) (SARS-CoV-2)
Tested applications	Elisa
Immunogen	Recombinant SARS-CoV-2 3C-like Proteinase(S3264-T3567)

Background

Cleaves the C-terminus of replicase polyprotein at 11 sites (By similarity). Recognizes substrates containing the core sequence [ILMV]-Q-[-[SGACN]. Also able to bind an ADP-ribose-1"-phosphate (ADRP) (By similarity).

Product performance

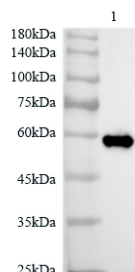
Form	Liquid
Buffer	PBS, pH7.4, containing 0.05% proclin300, 50% glycerol.
Concentration	0.31mg/ml
MW	33kDa

Application

Dilution Range

Elisa: 1:4000~1:8000

Tested Picture



Lysate: 0.1 µg/lane
Lane 1: Recombinant SARS-CoV-2
NSP5 Protein

Predicted band size: 59kDa
Observed band size: 59kDa

Recombinant Protein lysates were subjected to SDS PAGE followed by western blot with rabbit anti SARS-CoV-2 (2019-nCoV) NSP5 antibody at dilution of 1:32000.

Note

For research use only.