

## Product Details

### Summary

<b>Product name</b>	Anti 2019-nCoV NSP3 polyclonal antibody
<b>Catalog#</b>	ATP235
<b>description</b>	Produced in rabbits immunized with purified, Recombinant SARS-CoV-2 NSP3 protein
<b>Accession #</b>	P0DTC1
<b>Alternative names</b>	Non-structural protein 3, PL2-PRO, Papain-like proteinase, PL-PRO, Replicase polyprotein 1a
<b>Stability &amp; Storage</b>	Use a manual defrost freezer and avoid repeated freeze thaw cycles. Store at 2 to 8 °C for one week . Store at -20 to -80 °C for twelve months from the date of receipt.
<b>Specificity</b>	Recognizes SARS-CoV-2 NSP3 protein
<b>Isotype</b>	IgG
<b>Host</b>	Rabbit
<b>Clonality</b>	Polyclonal
<b>Conjugation</b>	Unconjugate
<b>Species reactivity</b>	Severe acute respiratory syndrome coronavirus 2 (2019-nCoV) (SARS-CoV-2)
<b>Tested applications</b>	Elisa
<b>Immunogen</b>	Recombinant SARS-CoV-2 NSP3(Glu1024-Gln1198)

### Background

Responsible for the cleavages located at the N-terminus of the replicase polyprotein. In addition, PL-PRO possesses a deubiquitinating/deISGylating activity and processes both 'Lys-48'- and 'Lys-63'-linked polyubiquitin chains from cellular substrates. Participates together with nsp4 in the assembly of virally-induced cytoplasmic double-membrane vesicles necessary for viral replication. Antagonizes innate immune induction of type I interferon by blocking the phosphorylation, dimerization and subsequent nuclear translocation of host IRF3. Prevents also host NF-kappa-B signaling.

### Product performance

<b>Form</b>	Liquid
<b>Buffer</b>	Liquid. Supplied as solution form in PBS, pH7.4, containing 0.05% proclin300,



50% glycerol.

Concentration

0.5 mg/ml

MW

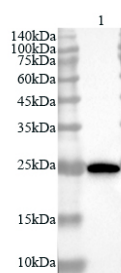
200kDa

## Application

Dilution Range

Elisa: 1:4000~1:8000

## Tested Picture



Lysate: 0.1  $\mu$ g/lane  
Lane 1: Recombinant SARS-CoV-2  
NSP3 Protein

Predicted band size: 22kDa  
Observed band size: 22kDa

Recombinant Protein lysates were subjected to SDS PAGE followed by western blot with rabbit anti SARS-CoV-2 (2019-nCoV) NSP3 Protein antibody at dilution of 1:1000.

## Note

For research use only.