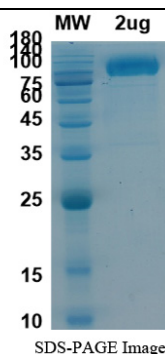


Product Details

Summary

| | |
|---------------------------------|--|
| Product name | Recombinant Human ACE2 protein |
| Catalog# | ATMP02478HU |
| description | Recombinant Human ACE2 is produced by Mammalian cells expression system and the target gene encoding Met1-Ser740 is expressed with C-His Tag |
| Expression system | Mammalian cells |
| Species | Homo sapiens (Human) |
| Accession # | NP_001358344.1 or Uniprot Q9BYF1 |
| Alternative names | ACE-related carboxypeptidase, Angiotensin-converting enzyme homolog, Metalloprotease MPROT15 |
| Predicted Molecular Mass | 94.75kDa |
| Purity | >90% as determined by SDS-PAGE |
| Endotoxin level | Please contact with the lab for this information. |
| Formulation | Supplied as solution form in PBS, pH7.5/ Supplied as lyophilized from PBS, pH7.5 |
| Shipping | In general, proteins are shipped out with blue ice unless customers require otherwise. |
| Stability &Storage | Use a manual defrost freezer and avoid repeated freeze thaw cycles. Store at 2 to 8 °C for one week . Store at -20 to -80 °C for twelve months from the date of receipt. |
| Reconstitution | Please refer to the instruction in the hard copy of COA. |
| Application | Immunogen |

SDS-PAGE image



Background

Angiotensin-Converting Enzyme 2 (ACE-2) is an integral membrane protein and a zinc metalloprotease of the ACE family, the ACE family includes somatic and germinal ACE. ACE-2 cleaves angiotensins I and II as a carboxypeptidase, ACE-2 converts angiotensin I to angiotensin 1-9, and angiotensin II to angiotensin 1-7. ACE-2 is also able to hydrolyze apelin-13 and dynorphin-13 with high efficiency. ACE-2 can be high expressed in testis, kidney and heart, in colon, small intestine and ovary at moderate levels. Captopril and lisinopril as the classical ACE inhibitor don't inhibit ACE-2 activity. ACE-2 may play an important role in regulating the heart function.

Note

For research use only.

