

Product overview

product name	Anti Caspase 9 polyclonal antibody
catalog No.	ATP013
Category	Primary antibody
Host	Rabbit
Species specificity	Human, other species was not test
Tested applications	ICC:1:50~200, IHC:1:50~100, WB 1:500-2000
Clonality	Polyclonal
Conjugation	Unconjugated
Immunogen	Recombinant protein of human Caspase 9(Lys100-270Thr).
Alternative Names	Caspase-9 ,CASP-9, Apoptotic protease Mch-6, Apoptotic protease-activating factor 3, APAF-3, ICE-like apoptotic protease 6, ICE-LAP6, CASP9, MCH6
Uniprot ID	P55211

Product performance

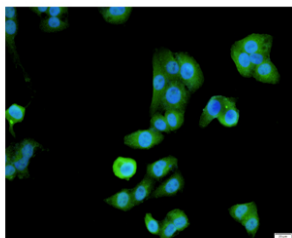
Form	Liquid
Buffer	PBS, pH7.4, containing 0.05% proclin300, 50% glycerol.
Storage	Use a manual defrost freezer and avoid repeated freeze thaw cycles. Store at 4°C for frequent use. Store at -20 to -80 °C for twelve months from the date of receipt.
Concentration	0.57mg/ml
Isotype	IgG
MW	46kDa
Purity	Antigen affinity purification

Dilution range

ICC, IHC, WB

Product experiment picture





Immunofluorescent analysis of HepG2 cells using Caspase 9 antibody at dilution of 1:50 and Alexa Fluor-488 conjugated Affinipure Goat anti rabbit IgG(H+L).

Reference

PMID: 23516580 ;pubmed:23516580;PMID: 15657060

Product background

Caspase 9, apoptosis-related cysteine protease (CASP9, synonyms: MCH6, APAF3, APAF-3, ICE-LAP6, CASPASE-9c) is a member of the cysteine-aspartic acid protease (caspase) family. Sequential activation of caspases plays a central role in the execution-phase of cell apoptosis. Caspases exist as inactive proenzymes which undergo proteolytic processing at conserved aspartic residues to produce 2 subunits, large and small, that dimerize to form the active enzyme. Caspase 9 is processed by APAF1, this step is thought to be one of the earliest in the caspase activation cascade. 10380-1-AP can recognize the pre- and cleaved- caspase 9.