

## Product overview

product name	Anti Bcl2 polyclonal antibody
catalog No.	ATP012
Category	Primary antibody
Host	Rabbit
Species specificity	Human, other species was not test
Tested applications	ICC: 1:50~200, IHC: 1:50~100
Clonality	Polyclonal
Conjugation	Unconjugated
Immunogen	Recombinant protein of human Bcl2(Met1-Asp211).
Alternative Names	Apoptosis regulator Bcl 2, Apoptosis regulator Bcl-2, Apoptosis regulator Bcl2, AW986256, B cell CLL/lymphoma 2, B cell leukemia/lymphoma 2, Bcl-2, Bcl2, BCL, C430015F12Rik, D630044D05Rik, D830018M01Rik, Leukemia/lymphoma, B-cell, Oncogene B-cell leukemia 2, PPP1R50, Protein phosphatase 1 regulatory subunit 50, Protein phosphatase 1, regulatory subunit 50
Uniprot ID	P10415

## Product performance

Form	Liquid
Buffer	PBS, pH 7.4, containing 0.05% proclin300, 50% glycerol.
Storage	Use a manual defrost freezer and avoid repeated freeze thaw cycles. Store at 4°C for frequent use. Store at -20 to -80 °C for twelve months from the date of receipt.
Concentration	0.55mg/ml
Isotype	IgG
MW	26kDa
Purity	Antigen affinity purification

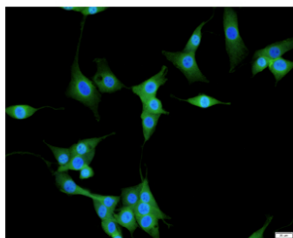
## Dilution range

ICC, IHC



## Product experiment picture

---



Immunofluorescent analysis of NIH/3T3 cells using BCL2 antibody at dilution of 1:50 and Alexa Fluor-488 conjugated Affinipure Goat anti rabbit IgG(H+L).

## Reference

---

PubMed:17418785;PMID: 18570871;PMID: 8183370

## Product background

---

BCL2 belongs to the Bcl-2 family. It suppresses apoptosis in a variety of cell systems including factor-dependent lymphohematopoietic and neural cells. BCL2 regulates cell death by controlling the mitochondrial membrane permeability (PMID: 10365962). It appears to function in a feedback loop system with caspases. BCL2 inhibits caspase activity either by preventing the release of cytochrome c from the mitochondria and/or by binding to the apoptosis-activating factor (APAF-1) (PMID: 10444588). This antibody is not suitable for rat and mouse species.

