

Product overview

product name	Anti CCND2 polyclonal antibody
catalog No.	ATP009
Category	Primary antibody
Host	Rabbit
Species specificity	Human, other species was not test
Tested applications	ICC: 1:50~200, IHC: 1:50~100
Clonality	Polyclonal
Conjugation	Unconjugated
Immunogen	Recombinant protein of human CCND2(Met1-289Lue).
Alternative Names	G1/S-specific cyclin-D2, CCND2, cyclin-D2
Uniprot ID	P30279

Product performance

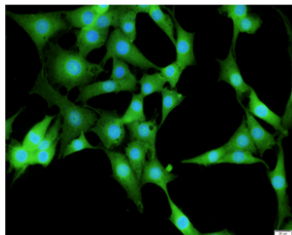
Form	Liquid
Buffer	PBS, pH 7.4, containing 0.05% proclin300, 50% glycerol.
Storage	Use a manual defrost freezer and avoid repeated freeze thaw cycles. Store at 4°C for frequent use. Store at -20 to -80 °C for twelve months from the date of receipt.
Concentration	0.48mg/ml
Isotype	IgG
MW	32kDa
Purity	Antigen affinity purification

Dilution range

ICC, IHC

Product experiment picture





Immunofluorescent analysis of NIH/3T3 cells using CCND2 antibody at dilution of 1:50 and Alexa Fluor-488 conjugated Affinipure Goat anti rabbit IgG(H+L).

Reference

PMID: 18827403 ;PMID: 17873913;PMID: 24705253

Product background

CCND2 belongs to the highly conserved cyclin family, whose members are characterized by a dramatic periodicity in protein abundance through the cell cycle. Cyclins function as regulators of CDK kinases. CCND2 forms a complex with and functions as a regulatory subunit of CDK4 or CDK6, whose activity is required for cell cycle G1/S transition. CCND2 has been shown to interact with and be involved in the phosphorylation of tumor suppressor protein Rb. High level expression of CCND2 was observed in ovarian and testicular tumors.

