

## Product overview

product name	Anti Desmin polyclonal antibody
catalog No.	ATP007
Category	Primary antibody
Host	Rabbit
Species specificity	Human, other species was not test
Tested applications	WB: 1:2000~1:8000, ICC: 1:50~200, IHC: 1:50~100
Clonality	Polyclonal
Conjugation	Unconjugated
Immunogen	Recombinant protein of human Desmin (Met1-Leu470).
Alternative Names	CMD1I, CSM1, CSM2, DES, DESM, Desmin
Uniprot ID	P17661

## Product performance

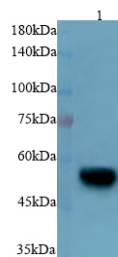
Form	Liquid
Buffer	PBS, pH 7.4, containing 0.05% proclin300, 50% glycerol.
Storage	Use a manual defrost freezer and avoid repeated freeze thaw cycles. Store at 4°C for frequent use. Store at -20 to -80 °C for twelve months from the date of receipt.
Concentration	0.35mg/ml
Isotype	IgG
MW	54kDa
Purity	Antigen affinity purification

## Dilution range

WB, ICC, IHC

## Product experiment picture

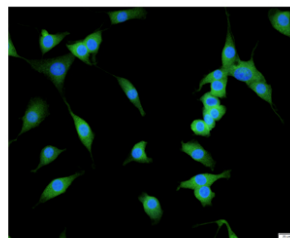




Lysate: 30µg/lane  
Lane 1: rat heart

Predicted band size : 53kDa  
Observed band size : 53kDa

Various lysates were subjected to SDS PAGE followed by western blot with Desmin antibody at dilution of 1:1000.



Immunofluorescent analysis of NIH/3T3 cells using Desmin antibody at dilution of 1:50 and Alexa Fluor-488 conjugated Affinipure Goat anti rabbit IgG(H+L).

## Reference

PubMed:25358400;PubMed:24200904;PubMed:25394388

## Product background

Desmin is the main intermediate filament protein in skeletal and cardiac muscle cells and is essential for both the structural integrity and the survival of muscle cells. As an abundant muscle-specific protein, desmin has been widely used as a marker of muscle derived tumors. Anti-desmin is also valuable in the differential diagnosis of tumors of uncertain origin.