

## Product overview

product name	Anti $\beta$ -tubulin Polyclonal Antibody
catalog No.	ATPA00014Rb
Category	Primary antibody
Host	Rabbit
Species specificity	Human,Rat,Mouse
Tested applications	WB
Clonality	Polyclonal
Clone No.	/
Conjugation	Unconjugated
Immunogen	Recombinant protein of human $\beta$ -tubulin (Met1~Ala444).
Alternative Names	TUBB,TUBB5.
Uniprot ID	P07437

## Product performance

Form	Liquid
Buffer	Supplied as solution form in PBS, pH7.4, containing 0.02% NaN <sub>3</sub> , 50% glycerol.
Storage	Use a manual defrost freezer and avoid repeated freeze thaw cycles. Store at 4 °C for frequent use. Store at -20 to -80 °C for twelve months from the date of receipt.
Concentration	0.5mg/ml
Isotype	IgG
MW	50-55kDa
Purity	Antigen affinity purification

## Dilution range

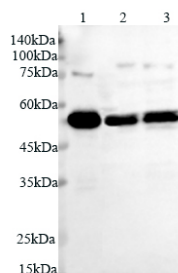
WB: 1:2000-1:8000

## Product experiment picture



Catalog Number: ATPA00014Rb

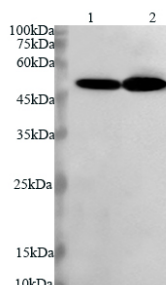
## Anti $\beta$ -tubulin Polyclonal Antibody



Lysate: 20  $\mu$ g/ml  
Lane 1: mouse brain  
Lane 2: SKOV3 cell line  
Lane 3: rat kidney

Predicted band size: 50kDa  
Observed band size: 50kDa

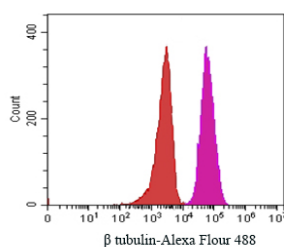
Various lysates were subjected to SDS PAGE followed by western blot with  $\beta$  tubulin antibody at dilution of 1:2000.



Lysate: 20  $\mu$ g/ml  
Lane 1: K562 cell line  
Lane 2: mouse liver

Predicted band size: 50kDa  
Observed band size: 50kDa

Various lysates were subjected to SDS PAGE followed by western blot with  $\beta$  tubulin antibody at dilution of 1:2000.



$1 \times 10^6$  THP-1 cells were stained with 1:100  $\beta$  tubulin antibody (purple) and control antibody (red). Fixed with 4% PFA blocked with BSA (30min). Alexa Fluor 488-conjugated AffiniPure Goat anti-rabbit IgG(H+L) with dilution 1:100.

## Product background

There are five tubulins in human cells: alpha, beta, gamma, delta, and epsilon. Tubulins are conserved across species. They form heterodimers, which multimerize to form a microtubule filament. An alpha and beta tubulin heterodimer is the basic structural unit of microtubules. The heterodimer does not come apart, once formed. The alpha and beta tubulins, which are each about 55 kDa MW, are homologous but not identical. Alpha and beta tubulins have been widely used as loading controls. Tubulin expression may vary according to resistance to antimicrobial and antimitotic drugs.