

Product overview

product name	Anti α -tubulin Polyclonal Antibody
catalog No.	ATPA10078Rb
Category	Primary antibody
Host	Rabbit
Species specificity	Human,Rat,Mouse
Tested applications	WB
Clonality	Polyclonal
Clone No.	/
Conjugation	Unconjugated
Immunogen	Recombinant protein of human α -tubulin (Met1~Glu448).
Alternative Names	Alpha-tubulin 1,Testis-specific alpha-tubulin,Tubulin H2-alpha,Tubulin alpha-1 chain,TUBA1.
Uniprot ID	P68366

Product performance

Form	Liquid
Buffer	Supplied as solution form in PBS, pH7.4, containing 0.02% NaN ₃ , 50% glycerol.
Storage	Use a manual defrost freezer and avoid repeated freeze thaw cycles. Store at 4 °C for frequent use. Store at -20 to -80 °C for twelve months from the date of receipt.
Concentration	0.5mg/ml
Isotype	IgG
MW	50-55kDa
Purity	Antigen affinity purification

Dilution range

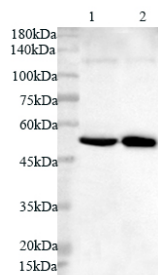
WB: 1:2000-1:8000

Product experiment picture



Catalog Number: ATPA10078Rb

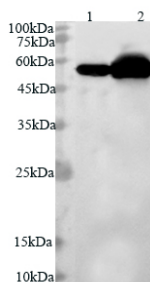
Anti α -tubulin Polyclonal Antibody



Lysate: 20 μ g/ml
Lane 1: HEK293 cell line
Lane 2: SKOV3 cell line

Predicted band size: 50kDa
Observed band size: 50kDa

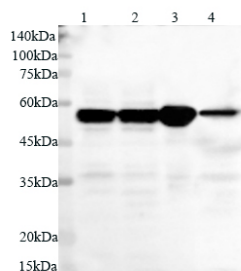
Various lysates were subjected to SDS PAGE followed by western blot with α tubulin antibody at dilution of 1:1000.



Lysate: 15 μ g/ml
Lane 1: K562 cell line
Lane 2: mouse brain

Predicted band size: 50kDa
Observed band size: 50kDa

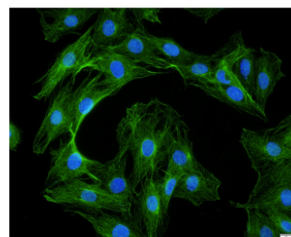
Various lysates were subjected to SDS PAGE followed by western blot with α tubulin antibody at dilution of 1:1000.



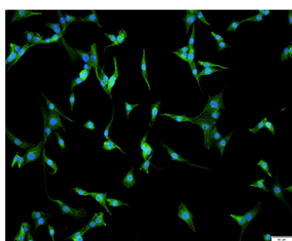
Lysate: 20 μ g/ml
Lane 1: HeLa cell line
Lane 2: mouse cerebrum
Lane 3: rat cerebrum
Lane 4: rat kidney

Predicted band size: 50kDa
Observed band size: 50kDa

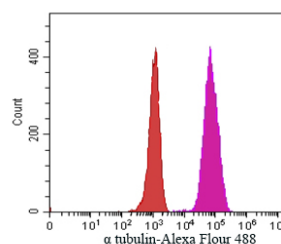
Various lysates were subjected to SDS PAGE followed by western blot with α tubulin antibody at dilution of 1:2000.



Immunofluorescent analysis of H929 cells using α tubulin antibody at dilution of 1:100 and Alexa Fluor-488 conjugated Affinipure Goat anti rabbit IgG(H+L).



Immunofluorescent analysis of NIH/3T3 cells using α tubulin antibody at dilution of 1:100 and Alexa Fluor-488 conjugated Affinipure Goat anti rabbit IgG(H+L).



1×10^6 THP-1 cells were stained with 1:100 α tubulin antibody (purple) and control antibody (red). Fixed with 4% PFA blocked with BSA (30min). Alexa Fluor 488-conjugated AffiniPure Goat anti-rabbit IgG(H+L) with dilution 1:100.

Product background

There are five tubulins in human cells: alpha, beta, gamma, delta, and epsilon. Tubulins are conserved across species. They form heterodimers, which multimerize to form a microtubule filament. An alpha and beta tubulin heterodimer is the basic structural unit of microtubules. The heterodimer does not come apart once formed. The alpha and beta tubulins, which are each about 55 kDa MW, are homologous but not identical. Alpha tubulin is useful for scientists across fields as an internal control due to its high, ubiquitous expression pattern. Tubulin expression may vary according to resistance to antimicrobial and antimitotic drugs. This antibody specifically recognizes Tubulin Alpha.