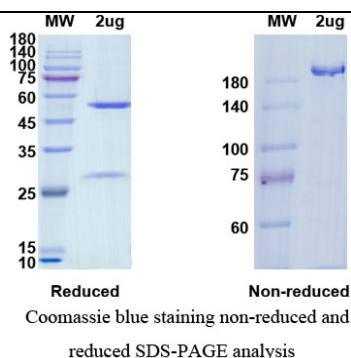


Product Details

Catalog No.	ATAD00092
INN (International Nonproprietary Name)	Adecatumumab
Purity	>95%

SDS-PAGE image



Concentration	1.97 mg/ml
Formulation	9mM Citric acid monohydrate, 41mM Na ₂ HPO ₄ , 1% mannitol, 5% trehalose, 0.02% Tween20, pH6.5
Source	CHO cells
Endotoxin level	Please contact with the lab for this information.
Note	For research use only .

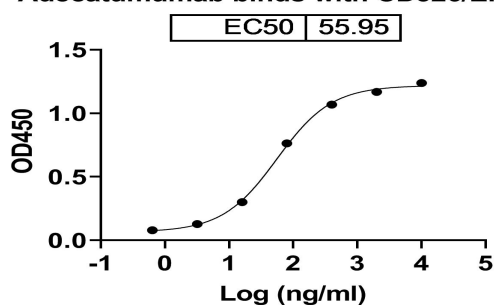
Bioactivity

Description	<p>Adecatumumab is a recombinant human monoclonal antibody of the IgG1 subclass with a binding specificity to epithelial cell adhesion molecule (EpCAM). EpCAM (CD326) is a cell surface protein that is frequently expressed at high level on most solid tumor types, including prostate, breast, colon, gastric, ovarian, pancreatic and lung cancer. Adecatumumab (MT201) is a recombinant human monoclonal antibody of the IgG1 subclass with a binding specificity to epithelial cell adhesion molecule (EpCAM). EpCAM (CD326) is a cell surface protein that is frequently expressed at high level on most solid tumor types, including prostate, breast, colon, gastric, ovarian, pancreatic and lung cancer. Overexpression of EpCAM has been shown to promote the proliferation, migration and invasiveness of breast cancer cells. Moreover, expression of EpCAM is associated with</p>
-------------	---

decreased survival in a number of cancer indications, including breast, gall bladder, bile duct, ovarian and ampullary pancreatic cancer. EpCAM has recently been shown to be expressed on cancer stem cells from breast, prostate, colon and pancreatic cancer. Clinical studies have shown a favorable safety profile and that clinical activity depends on the EpCAM target expression.

Bioactivity

Adecatumumab binds with CD326/EPCAM



Alternative names	MT201
Specificity target name;species	EPCAM[Homo sapiens]
Species	Homo sapiens
Receptor identification	IgG1-nd

Chemistry

CAS	503605-66-1
Storage	Use a manual defrost freezer and avoid repeated freeze-thaw cycles. Store at +4°C short term (1-2 weeks). Store at -20 °C 12 months. Store at -80°C long term.

