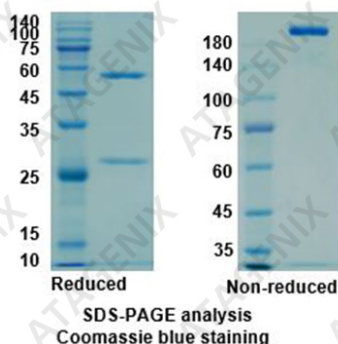


Product Details

| | |
|---|-------------|
| Catalog No. | ATAD00004 |
| INN (International Nonproprietary Name) | Bevacizumab |
| Purity | >95% |

SDS-PAGE image

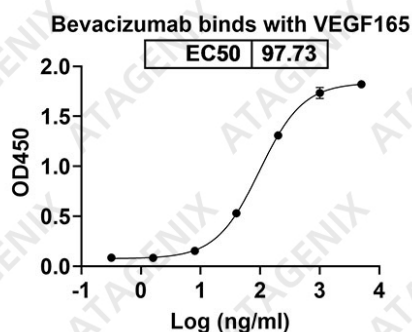


| | |
|-----------------|---|
| Concentration | 6.2 mg/ml |
| Formulation | PBS buffer PH7.4 |
| Source | CHO cells |
| Endotoxin level | Please contact with the lab for this information. |
| Note | For research use only . |

Bioactivity

| | |
|-------------|---|
| Description | <p>Ipilimumab (anti-CTLA-4) is an immunomodulatory monoclonal antibody directed against the cell surface antigen CTLA-4 and also a type of immune checkpoint inhibitor. Bevacizumab, a humanized monoclonal antibody, specifically binds to all VEGF-A isoforms with high affinity.</p> |
|-------------|---|

Bioactivity



| | |
|--|--|
| Alternative names | 12-IgG1,F(ab)-12 IgG1,Fab-12 IgG1,rhuMAb-VEGF |
| Specificity target name;species | VEGFA[Homo sapiens] |
| Activity in vitro | <p>Bevacizumab, a humanized monoclonal antibody, specifically binds to all VEGF-A isoforms with high affinity, and inhibits its interaction with VEGFR-1 and VEGFR-2.</p> <p>Experimental analysis shows that the EC50 of Bevacizumab to bind VEGF analyzed by ELISA is 0.18 µg/mL. Binding kinetics assays show similar results that Bevacizumab inhibits the VEGF-induced proliferation of HUVEC with an IC50 value of 0.047±0.0081 µg/mL.</p> |
| Species | Humanized |
| Receptor identification | IgG1-kappa |

Chemistry

| | |
|----------------|--|
| MV | 149000.00 Da |
| CAS | 216974-75-3 |
| Storage | <p>Use a manual defrost freezer and avoid repeated freeze-thaw cycles.</p> <p>Store at +4°C short term (1-2 weeks).</p> <p>Store at -20 °C 12 months.</p> <p>Store at -80°C long term.</p> |

