

## Product Details

### Summary

<b>Product name</b>	Anti Pepsinogen II/PGC mouse monoclonal antibody (9A7)
<b>description</b>	Pepsinogens, aspartic proteinases, are classified into two groups, pepsinogen I (PGI) and pepsinogen II (PGII). PGI and PGII are mainly secreted by gastric chief cells. They are useful in diagnosing severe atrophic gastritis and stomach cancer.
<b>Alternative names</b>	PGC, Pepsinogen C, Pepsinogen II, Gastricsin
<b>Endotoxin level</b>	Please contact with the lab for this information.
<b>Stability &amp;Storage</b>	Use a manual defrost freezer and avoid repeated freeze thaw cycles.  Store at 2 to 8 °C for one week .  Store at -20 to -80 °C for twelve months from the date of receipt.
<b>Source</b>	Ascites
<b>Isotype</b>	IgG1
<b>Host</b>	Mouse
<b>Clonality</b>	Monoclonal
<b>Clone No.</b>	9A7
<b>Conjugation</b>	Unconjugated
<b>Species reactivity</b>	Homo sapiens (Human)
<b>Tested applications</b>	WB,IHC,ELISA
<b>Immunogen</b>	Recombinant protein of full length human Pepsinogen II

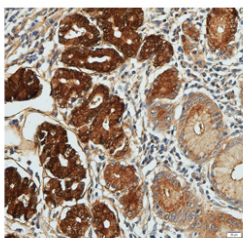
### Product performance

<b>Form</b>	Liquid
<b>Buffer</b>	PBS, pH7.4, containing 0.02% NaN <sub>3</sub> , 50% glycerol.
<b>Concentration</b>	Please refer to the instruction in the hard copy of COA.



## Tested Picture

---



Immunohistochemical analysis of human gastric tissue using Pepsinogen II antibody dilution of 1:100 heat mediated antigen retrieved with Tris-EDTA buffer(pH9).

## Note

---

For research use only.

