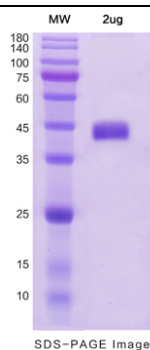


Product Details

Summary

English name	Recombinant Human PD-L2 protein ,C- His Tag
Purity	>90% as determined by SDS-PAGE
Endotoxin level	<1.0 EU per µg of the protein as determined by the LAL method.
Construction	A DNA sequence encoding the human PDCD1LG2(Met1-Pro219) was fused with the C-terminal His Tag
Accession #	Q9BQ51
Host	Mammalian cells
Species	Homo sapiens (Human)
Predicted Molecular Mass	24.2kDa
Formulation	Supplied as solution form in PBS or lyophilized from PBS .
Shipping	In general, proteins are provided as lyophilized powder/frozen liquid. They are shipped out with dry ice/blue ice unless customers require otherwise.
Stability &Storage	Use a manual defrost freezer and avoid repeated freeze thaw cycles. Store at 2 to 8 °C for one week . Store at -20 to -80 °C for twelve months from the date of receipt.
Reconstitution	Reconstitute in sterile water for a stock solution. A copy of datasheet will be provided with the products, please refer to it for details.

SDS-PAGE image



Background

Alternative Names

PD-L2, B7-DC



ATAGENIX LABORATORIES

Catalog Number:ATMP00431HU

Recombinant Human PD-L2 protein ,C- His Tag

