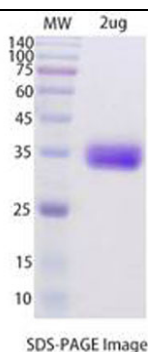


Product Details

Summary

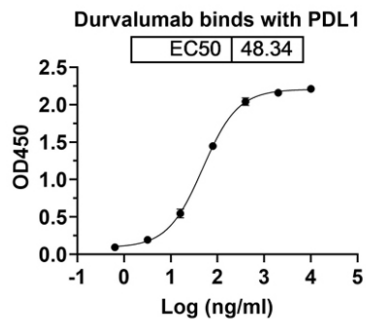
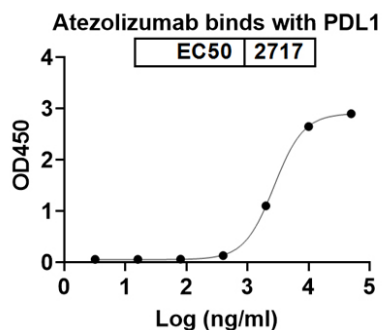
English name	Recombinant Human PD-L1 protein ,C- His Tag
Purity	>90% as determined by SDS-PAGE
Endotoxin level	<1.0 EU per µg of the protein as determined by the LAL method.
Construction	A DNA sequence encoding the human CD274(Met1~Arg238) was fused with the C-terminal His Tag
Accession #	Q9NZQ7
Host	Mammalian cells
Species	Homo sapiens (Human)
Predicted Molecular Mass	26.11kDa
Formulation	Supplied as solution form in 50 mM Tris-HCl, pH 7.5, 150 mM NaCl or lyophilized from 50 mM Tris-HCl, pH 7.5, 150 mM NaCl.
Shipping	In general, proteins are provided as lyophilized powder/frozen liquid. They are shipped out with dry ice/blue ice unless customers require otherwise.
Stability &Storage	Use a manual defrost freezer and avoid repeated freeze thaw cycles. Store at 2 to 8 °C for one week . Store at -20 to -80 °C for twelve months from the date of receipt.
Reconstitution	Reconstitute in sterile water for a stock solution. A copy of datasheet will be provided with the products, please refer to it for details.

SDS-PAGE image



SDS-PAGE Image

Bioactivity



Background

Alternative Names

B7H1, PDCD1L1, PDCD1LG1, PDL1